

ACCU-CHEK® Aviva



Owner's Booklet for Self-Testing Only

Blood Glucose Meter



ACCU-CHEK®

The ACCU-CHEK Aviva Meter



1. Display

Shows results, messages, and test results stored in memory.

2. Right Arrow and Left Arrow Buttons

Press to enter memory, adjust settings, and scroll through test results.

3. Test Strip Slot

Insert test strip here.

4. Code Key Slot

Black code key is inserted here.

5. Battery Door

Flip open to replace battery.

6. Power/Set Button

Turns meter on or off and sets options.

7. Infrared (IR) Window

Transfers data from meter to computer.

8. Battery

1 Your New System



9. Test Strip Container

10. Golden End

Insert this end into meter.

11. Yellow Window

Touch blood drop or control solution here.

12. Control Solution Bottle

13. Black Code Key

14. Pre-inserted Black Code Key

NOTE

The meter is already coded and comes with a pre-inserted **black** code key that you never need to change. Even if you use test strips from test strip boxes that contain another code key that is a different color or has different code numbers, you never need to change the **black** code key again.

1 Your New System

Using the ACCU-CHEK Aviva Plus System

- Use the test strip immediately after removing it from the test strip container.
- Do not apply blood or control solution to the test strip before inserting it into the meter. Retest with a new test strip. If a result appears before applying blood or control solution, do not act on that result.
- Close the test strip container tightly immediately after removing a test strip. Moisture can damage the test strips and produce incorrect results.
- Store the unused test strips in their original container with the cap tightly closed.
- Discard the test strips if they are past the **Use By** date printed on the test strip container. If the **Use By** date is missing or cannot be read, do not use the test strips. Contact the ACCU-CHEK Customer Care Service Center at 1-800-858-8072.
- Refer to the test strip package insert for test strip storage and system operating conditions.
- Do not remove test strips from the test strip container and put them into another container, such as a plastic bag, pocket, purse, wallet, etc.
- Do not reuse test strips. Once control solution or blood has been applied to a test strip, discard it. If a retest is necessary, use a new test strip.
- Perform a control test every time you open a new test strip box.

WARNING

To prevent inaccurate results:

- DO NOT expose test strips to heat, moisture, or humidity. Temperatures outside the required range, as well as moisture and humidity, can damage the test strips and lead to inaccurate results.
- DO NOT bend, cut, or alter the test strips.
- DO NOT get dirt, food, or other material on the test strip.

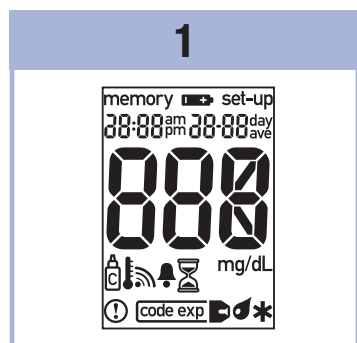
NOTE

The meter is already coded and comes with a pre-inserted **black** code key that you never need to change. Even if you use test strips from test strip boxes that contain another code key that is a different color or has different code numbers, you never need to change the **black** code key again.

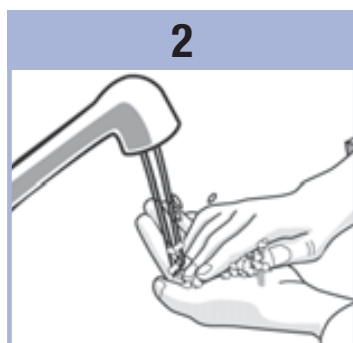
Performing a Blood Glucose Test with Blood from Your Fingertip

Refer to Important Safety Information before performing a blood glucose test.

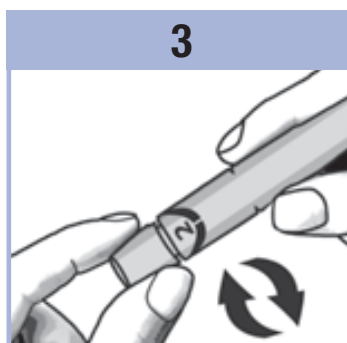
Before you perform your first blood glucose test, set up the meter correctly and perform a control test. You need the meter with a pre-inserted black code key, a test strip, and a lancing device with a lancet inserted, to perform a blood glucose test.



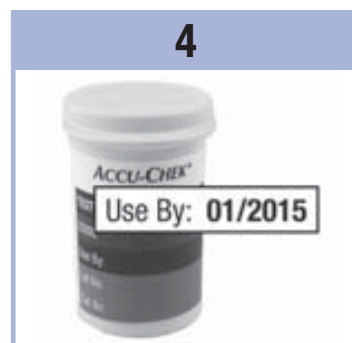
1
Check the meter display for missing segments. All segments should look like the picture.



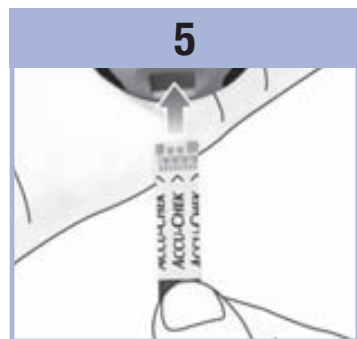
2
Wash your hands with warm soapy water and dry thoroughly. Dirty or wet hands could affect test results.



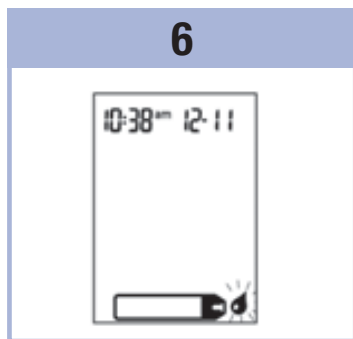
3
Adjust the comfort dial.



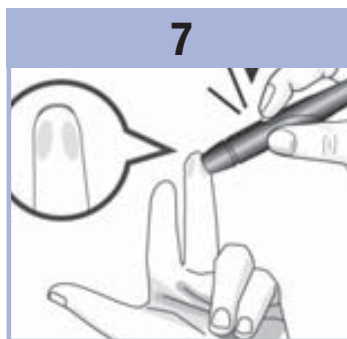
4
Check the **Use By** date on the test strip container. Do not use test strips past the **Use By** date.



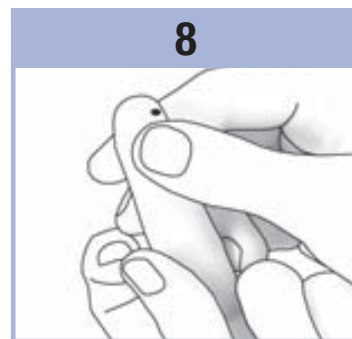
5
Insert the test strip into the meter in the direction of the arrows. The meter turns on and beeps. The code number appears briefly.



6
When the blood drop symbol flashes, obtain a blood drop.



7
Place the lancing device firmly against the side of your fingertip. Press the yellow release button to prick your finger.



8
Gently squeeze your finger to assist the blood flow. This helps you get a blood drop.

4 Blood Glucose Tests

9



Touch the blood drop to the **front edge** of the yellow window of the test strip.

Do not put blood on top of the test strip.

The meter beeps and ⌚ flashes when there is enough blood in the test strip.

10



The test result appears on the display.

To assign a marker to the test result, leave the test strip in the meter.

See Chapter 4, Marking Blood Glucose Results.

Otherwise, remove and discard the used test strip.

After a successful test, the meter turns itself off 5 seconds after the test strip is removed.

11



Discard the used lancet.

Remove the cap and point the lancet away from you. Slide out the ejector to release the lancet into a puncture-proof container. **Always discard according to local regulations.**

12

Wash hands thoroughly with soap and water.